

# MATERIAL SELECTION

CUSTOMIZABLE COMPONENTS

//

FABRIC

LEATHER

METAL

WOOD

## CUSTOMIZABLE COMPONENTS

### CIRCLE DINING CHAIR

The Circle Dining Chair is available with and without armrest. It comes fully upholstered in a wide range of fabrics and leather. The armrest is wrapped in leather cord, the frame is in solid wood and fittings are either of brass, aged brass or stainless steel.

**UPHOLSTERY BACK** Back/undersides of the upholstery

Leather | Fabric | COM/COL

**ARMREST LEATHER CORD** Leather cord covering the horizontal armrest bow

Leather Cord

**UPHOLSTERY FRONT** Front/topsides of the upholstery

Leather | Fabric | COM/COL

**PIPING** Fabric or leather covered piping/welting

Leather | Fabric | COM/COL

**ARMREST BOW** Vertical and exposed armrest bow

Brass | Aged Brass | Stainless Steel | Matte Black Steel

**WOODEN FRAME** Chair frame in solid wood

Walnut | Black Stained Ash | White Oiled Ash |  
Oak | Smoked Oak

**FITTINGS** All metal parts except the vertical armrest bow

Brass | Aged Brass | Stainless Steel



## WIRE COLLECTION

The Wire Collection was conceived as an innovative synthesis of two distinct and time-honoured crafts: saddle making and precision metalwork.

The upholstery is made of a thick tooling leather on the backside, providing the necessary stiffness, and of a soft furniture leather on the front, providing comfort. The colour of both leather types is either being matched, or, when not available, paired with a black tooling leather for the backside (the combination named Two Tone).

**UPHOLSTERY BACK** Back/underside of the upholstery (3,5 mm thick tooling/saddle leather)

Tooling Leather

**UPHOLSTERY FRONT** Front/topside of the upholstery (furniture leather)

Leather

**METAL FRAME** Structural part made of steel rods

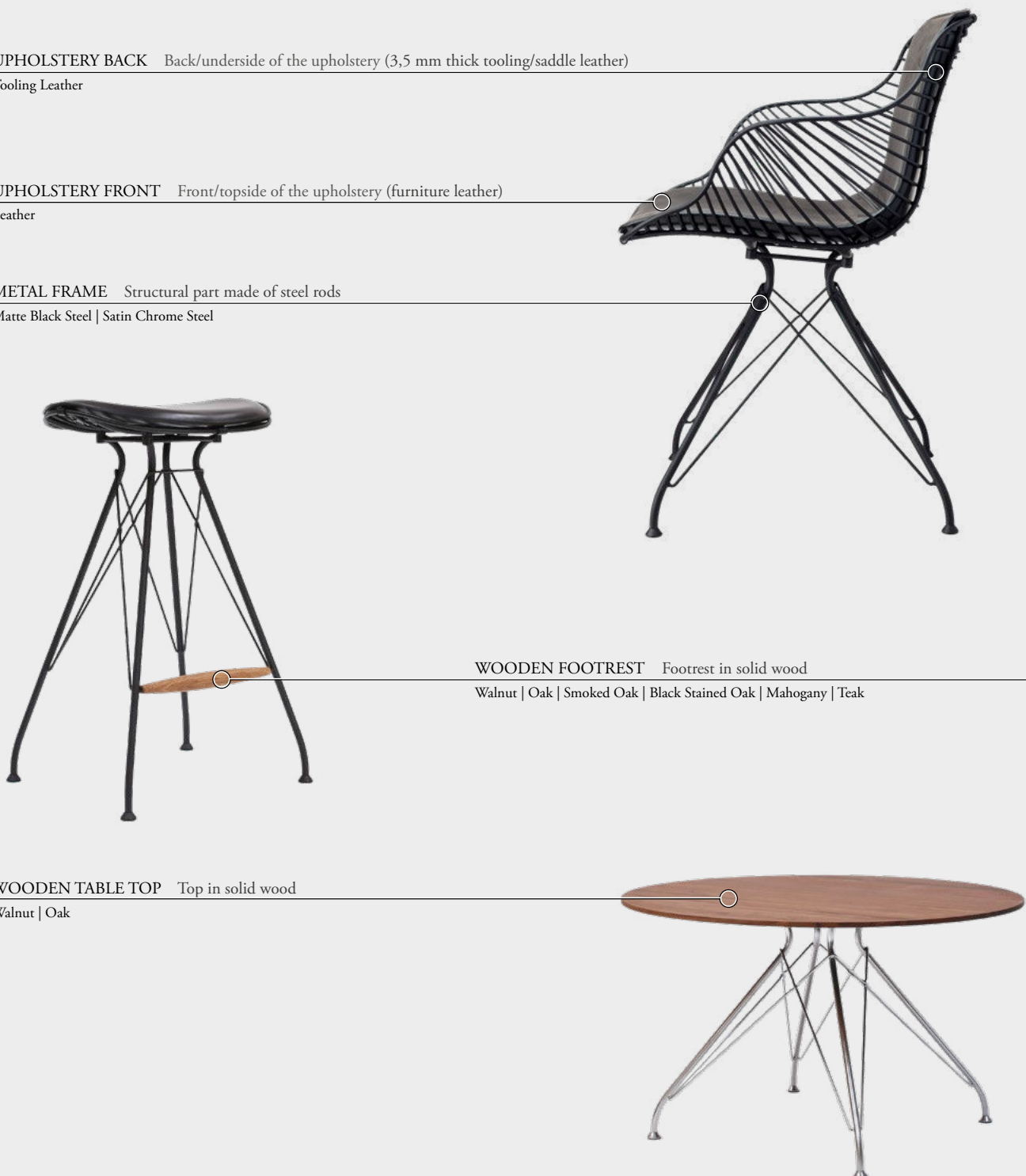
Matte Black Steel | Satin Chrome Steel

**WOODEN FOOTREST** Footrest in solid wood

Walnut | Oak | Smoked Oak | Black Stained Oak | Mahogany | Teak

**WOODEN TABLE TOP** Top in solid wood

Walnut | Oak



# FABRIC

The fabrics mentioned below are for inspiration.  
COM options are available and the possibilities, when it comes  
to the choice of fabric, are almost endless.

*Fabric group 1*

RIME

FIORD

JAALI

---

*Fabric group 2*

COCO

MARALINGA

OKINAWA

GIO

BALGO

---

*Fabric group 3*

VIENNA VELVET

## FABRIC OVERVIEW

---

The overview refers to the fabric groups available in the price list.  
Occasionally, our suppliers are changing their collections and individual colours can be phased out. Therefore, we cannot guarantee that all colours are available at all times.

For further information on the inspirational fabrics, please follow the links at the fabrics listed below or have a look at:

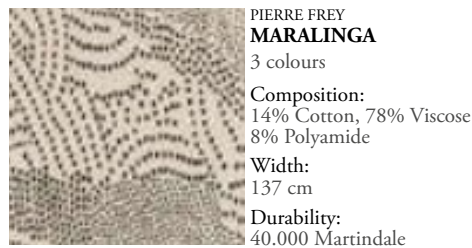
[www.pierrefrey.com](http://www.pierrefrey.com) | [www.dedar.com](http://www.dedar.com) | [www.delecuona.com](http://www.delecuona.com) | [www.kvadrat.dk](http://www.kvadrat.dk)

---

### Fabric group 1



### Fabric group 2



### Fabric group 3



## FABRIC AVAILABILITY ON PRODUCTS

**Circle Collection:** All fabrics

\* Fabrics with abrasion resistance less than 25.000 Martindale are not recommended for hard/public use, but for private use or as the backside of the furniture where less wear and tear are to be expected.

---

# LEATHER

The leathers shown are our standard leathers.  
COL options are available.



# LEATHER

Leather is a natural material and may vary in appearance - also depending on the environment it's placed in (light, humidity and heat). Colour differences and natural markings (insect bites, scars, etc.) are reminiscent the natural origins of the animal and are to be expected.

*Aniline leather*

## NATURAL

Natural is a 'naked' aniline leather of the highest quality. It is undyed and will change colour and gain plenty of patina and character over time. Subdued natural markings are to be expected. Vegetable tanned (Cr6+ free process).

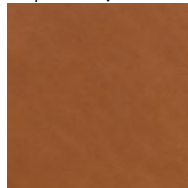
Natural



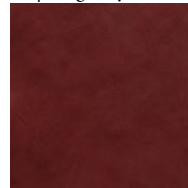
## ELEGANCE

Elegance is an aniline leather at the top of the range of deluxe, high-end leathers. Subdued natural markings are to be expected. Tanned with chrome followed by a vegetable tanning process to enhance the firmness (Cr6+ free process). Water-based aniline dye.

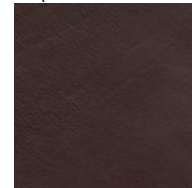
El. | Whiskey



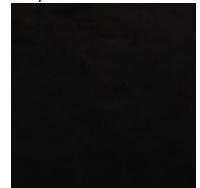
El. | Burgundy



El. | Dark Brown



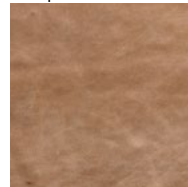
El. | Black



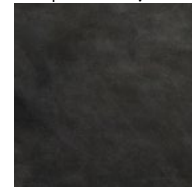
## MATSTONE

Matstone is an aniline leather with subtle, natural markings with an almost velvety expression. Matstone boasts a matte raw look with a touch of understated elegance and softness. Synthetic, chrome-free tanning process. Water-based aniline dye. Nordic Swan Ecolabel.

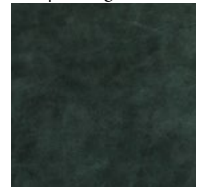
Ma. | Sand\*



Ma. | Dark Grey\*



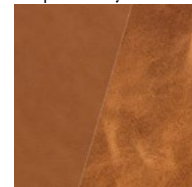
Ma. | Racing Green



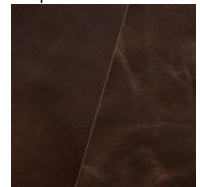
## YELLOWSTONE

Yellowstone is an aniline leather. It has incomparable depth and a naturally-worn look due to a pull-up effect. It's robust with visible natural markings and a slightly worn look. Tanned with chrome followed by a vegetable tanning process to enhance the firmness (Cr6+ free process). Water-based aniline dye.

Ye. | Whiskey



Ye. | Dark Brown



NOTE: By choosing Yellowstone you accept a very lively type of leather that variates in structure and type of natural markings from hide to hide.

*\*For the Wire Collection, the colours Matstone 'Sand' and 'Dark Grey' are only available in the Two Tone combination Sand/Black and Dark Grey/Black, with a black tooling leather on the back side of the chair (description on p. 17).*

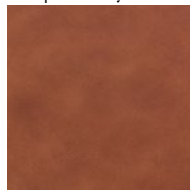
*Protected aniline leather*

## HORIZON

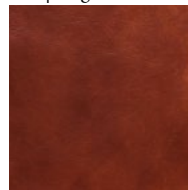
Horizon is a protected aniline leather with a special surface treatment that protects it from stains and fading. It is protected but developed to have the look and feel of aniline leather with discrete natural markings.

Tanned with chrome (Cr6+ free process).  
Water-based aniline dye.

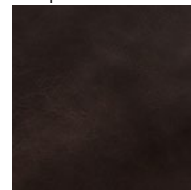
Ho. | Whiskey



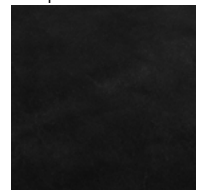
Ho. | Cognac Red



Ho. | Dark Brown



Ho. | Black



## LEATHER CORD

The armrest leather cord for the Circle Collection comes in three basic colours. The cord may vary in tone and it will gain patina over time.



## LEATHER AVAILABILITY ON PRODUCTS

**Circle Collection:** Natural | Elegance | Matstone | Yellowstone | Horizon | Leather Cord

**Wire Collection:** Elegance | Matstone | Yellowstone | Horizon



# METAL

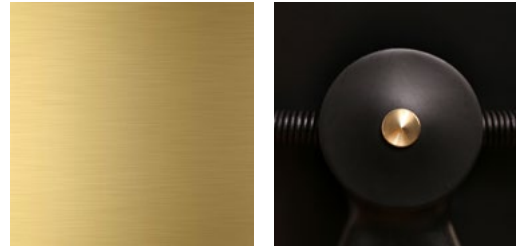
# METAL

---

## BRASS

The brass is raw, untreated solid brass and will patinate over time. Depending on use and maintenance, brass can either become darker or lighter.

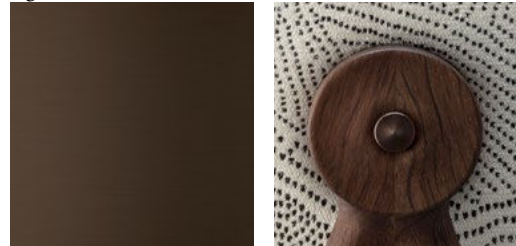
Brass



## AGED BRASS

The aged brass is raw solid brass and will slightly patinate over time. Depending on use and maintenance, brass can either become darker or lighter.

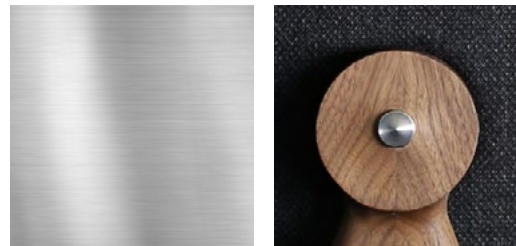
Aged Brass



## STAINLESS STEEL

Stainless steel does not suffer uniform corrosion and will therefore maintain its appearance over time.

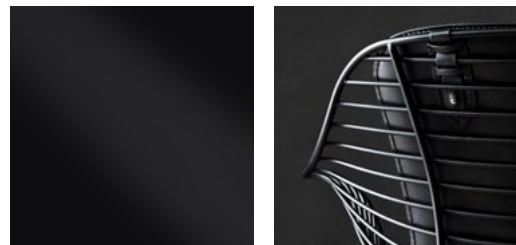
Stainless Steel



## MATTE BLACK STEEL

The black powder coating (a thermoset polymer) has a matte finish and is applied electro-statically as a powder. Powder coating is more durable than conventional paint and creates a smooth, uniform surface with a matte appearance. Small variations in degree of sheen may occur from piece to piece.

Matte Black Steel



## SATIN CHROME STEEL

The satin chrome plating used for the Wire Collection is a hexavalent chromium (Cr6+) free process. It is a very durable surface treatment. The surface has a matte appearance like aluminium or stainless steel. Small variations in degree of sheen may occur from piece to piece.

Satin Chrome Steel



---

## METAL AVAILABILITY ON PRODUCTS

- Circle Collection:** Brass (fittings and bow) | Aged Brass (fittings and bow) | Stainless Steel (fittings and bow) |  
Matte Black Steel (bow)
- Wire Collection:** Matte Black Steel | Satin Chrome Steel

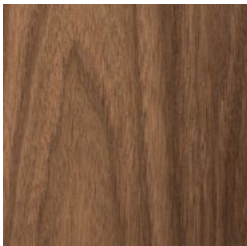
# WOOD

# WOOD

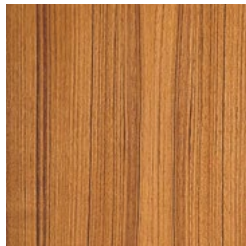
---

Wood is a natural material and may vary in appearance - also depending on the environment it's placed in (light, humidity and heat). Minor knots, colour differences as well as strong and weak annual rings are a sign of genuineness and are to be expected.

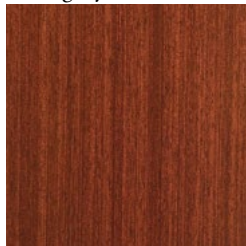
Walnut



Teak



Mahogany



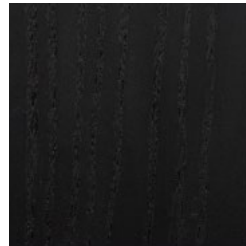
White Oiled Ash



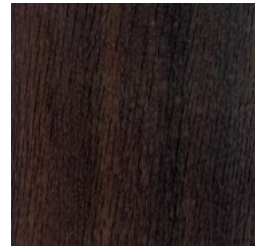
Oak



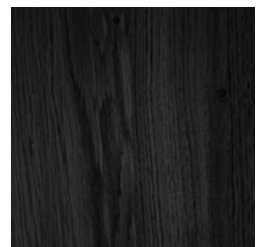
Black Stained Ash



Smoked Oak



Black Stained Oak



---

## WOOD AVAILABILITY ON PRODUCTS

**Circle Collection:** Walnut | White Oiled Ash | Black Stained Ash | Oak | Smoked Oak

**Wire Bar Stool (footrest):** Walnut | Oak | Smoked Oak | Black Stained Oak | Mahogany | Teak

**Wire Coffee Table:** Walnut | Oak

# O&D WEBSITE NOTE

www.OandD.dk

With the Overgaard & Dyrman website, our goal is to supply detailed information and to offer a user-friendly experience for our customers and business partners.

The O&D website is built on visuals supported by explanatory background information. A red thread in layout and menu will intuitively guide you through the page - telling about who we are, what we do and what we stand for - and of course to give comprehensive information about our products and where to find them.

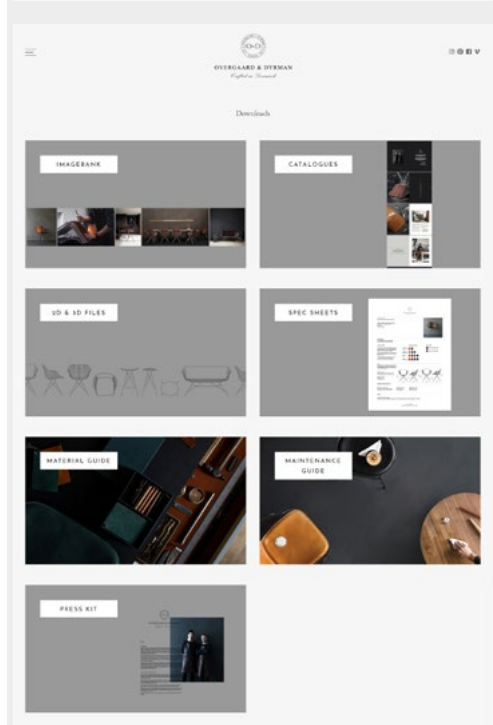
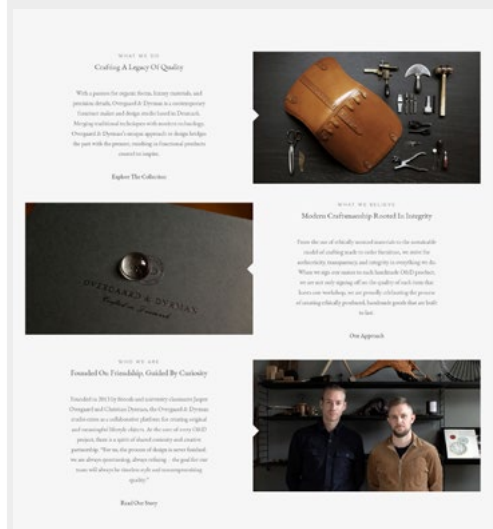
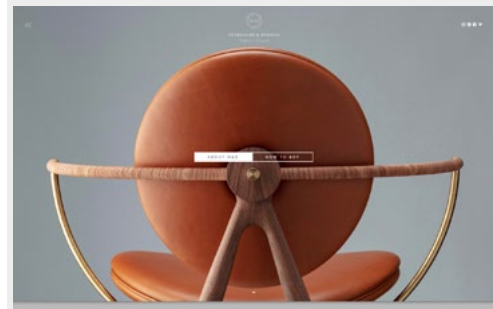
Additionally a download section makes it easy to access relevant information, whether you are an architect, retailer, journalist or a private customer.

The download section offers comprehensive information and material such as:

- High resolution images of our collections. Including:
  - Lifestyle images
  - Pack shots
  - Process and workshop images
- PDF version of the latest price list and catalogue
- 2D & 3D Files
- Specification Sheets
- Material Guide
- Maintenance Guide
- Press Kit

Marketing Material & Download section link:

<https://oandd.dk/downloads/>



**Contact**

sales@OandD.dk  
+45 6915 1011

[www.OandD.dk](http://www.OandD.dk)

OVERGAARD & DYRMAN  
Voerbjergvej 40T  
9400 Noerresundby  
Denmark

DK35247882